

100% of final size (130 x 249mm)

249 mm

130 mm

# POISON

**KEEP OUT OF REACH OF CHILDREN  
READ SAFETY DIRECTIONS  
BEFORE OPENING OR USING  
FOR ANIMAL TREATMENT ONLY**

## Q-drench®

**MULTI-COMBINATION DRENCH FOR SHEEP**

**ACTIVE CONSTITUENTS: 40 g/L LEVAMISOLE  
HYDROCHLORIDE, 37.5 g/L CLOSANTEL,  
25 g/L ALBENDAZOLE, 1.0 g/L ABAMECTIN**

For the treatment and control in sheep of susceptible gastro-intestinal roundworms (including strains with single or dual resistance to macrocyclic lactones, benzimidazoles, levamisole or closantel, and strains of *Haemonchus contortus* with emerging resistance to closantel). It is also effective against lungworm, tapeworms, mature and late immature liver fluke, nasal bot and itch mite.



1 L



**Jurox**

### INDICATIONS:

Q-drench Multi-Combination Drench for Sheep contains abamectin, albendazole, closantel and levamisole, which are members of the macrocyclic lactone, benzimidazole, salicylanilide and imidazothiazole groups respectively. It is a broad-spectrum oral anthelmintic which can be used against susceptible gastro-intestinal parasites and to prevent the introduction of resistant strains on to a property. It is effective against sensitive strains of the following parasites of sheep:

#### Adult and immature gastrointestinal roundworms:

- Barber's Pole Worm (*Haemonchus contortus*) - including inhibited L4 stage and strains with single, dual or triple resistance to macrocyclic lactones, benzimidazoles, levamisole or closantel, and strains with emerging resistance to closantel.
- Small Brown Stomach Worm (*Teladorsagia (Ostertagia) circumcincta*) - including inhibited L4 stage and strains with single or dual resistance to macrocyclic lactones, benzimidazoles or levamisole.
- Black Scour Worm (*Trichostrongylus colubriformis*) including strains with single or dual resistance to macrocyclic lactones, benzimidazoles or levamisole.
- Large Stomach Worm (*Haemonchus placei*)
- Stomach Hair Worm (*Trichostrongylus axei*)
- Black Scour Worm (*Trichostrongylus vitrinus*)
- Small Intestinal Worm (*Cooperia* spp)
- Thin-Necked Intestinal Worm (*Nematodirus* spp)
- Large Mouthed Bowel Worm (*Chabertia ovina*)
- Nodule Worm (*Oesophagostomum columbianum*)
- Large Bowel Worm (*Oesophagostomum venulosum*)
- Whip Worm (*Trichuris ovis*)
- Intestinal Threadworm (*Strongyloides papillosus*)
- Hookworm (*Bunostomum* spp)
- Nasal Bot (*Oestrus ovis*)

**Lungworm** - Large lungworm (*Dictyocaulus viviparus*)

**Liver Fluke** (*Fasciola hepatica*) - mature fluke and immature forms including 6 week old stages, reduces the output of viable fluke eggs.

**Tapeworms** (*Monezia* spp.) - heads and segments

**Itch mite** (*Psorergates ovis*)

**DIRECTIONS FOR USE:**

#### RESTRAINTS:

**DO NOT USE in female sheep which are producing or may in the future produce milk or milk products for human consumption.**

**DO NOT USE in lambs under 6 weeks of age or 10 kg bodyweight.**

For use as a quarantine drench: Treat all animals on arrival, or ideally at farm of origin, and hold in yards for 24 hours before release.

For use in a strategic worm control program: Speak to your animal health adviser or veterinarian.

Resistance may develop to any chemical. Ask your local veterinary practitioner or animal health adviser for recommended parasite management practices for your area to reduce development of resistance. It is advisable that a resistance test be conducted before any parasite treatment is used.

#### PRECAUTIONS:

Exercise care in handling weak, pregnant and young animals to avoid unnecessary stress. Avoid yarding animals off-feed overnight, and ensure animals have access to water when yarded prior to drenching. Recommended dose should not be exceeded, except under veterinary supervision.

**Jurox**

Jurox Pty Limited  
85 Gardiner Road  
Rutherford NSW 2320  
Infoline 1800 023 312

## Q-drench®

### SHAKE WELL BEFORE USE

#### DOSAGE TABLE

Liveweight	Dose	1 L treats
11 - 15 kg	3 mL	333
16 - 20 kg	4 mL	250
21 - 25 kg	5 mL	200
26 - 30 kg	6 mL	166
31 - 35 kg	7 mL	142
36 - 40 kg	8 mL	125
41 - 45 kg	9 mL	111
46 - 50 kg	10 mL	100
51 - 55 kg	11 mL	90
56 - 60 kg	12 mL	83
61 - 65 kg	13 mL	76
66 - 70 kg	14 mL	71
71 - 75 kg	15 mL	66

Sheep in excess of 75 kg to be dosed at 1 mL per 5 kg bodyweight.

#### WITHHOLDING PERIODS:

**MEAT: DO NOT USE less than 28 days before slaughter for human consumption.**  
**MILK: DO NOT USE in female sheep which are producing or may in the future produce milk or milk products for human consumption.**

#### TRADE ADVICE

**EXPORT SLAUGHTER INTERVAL (ESI): This product does not have an ESI established. For advice on the ESI contact Jurox Pty Ltd on 1800 023 312 before using this product.**

**SAFETY DIRECTIONS:** Poisonous if absorbed by skin contact or swallowed. May irritate the eyes and skin. Avoid contact with the eyes and skin. When opening the container and pouring large quantities wear elbow-length PVC gloves. After each day's use wash gloves. Wash hands after use.

**FIRST AID:** If poisoning occurs, contact a doctor or Poisons Information Centre, phone 13 11 26. If skin contact occurs, remove contaminated clothing and wash skin thoroughly.

Further information is contained in the Material Safety Data Sheet (MSDS) which is available from the manufacturer. Phone 1800 023 312.

**PROTECTION OF WILDLIFE, FISH, CRUSTACEANS AND THE ENVIRONMENT:** Abamectin is extremely toxic to aquatic species. Do not contaminate dams, rivers, streams or other waterways with the chemical or used container.

DISPOSE of empty container by wrapping with paper and putting in garbage.

STORE below 30°C (room temperature), in original container. Do not freeze. Do not store at low temperature.

APVMA Approval No. 56573/1L/0708

(B)

EXP.



9 338094 000684

408746

APVMA FILE: 56573\_45308\_1L\_label\_MPL\_V01.pdf  
Dimensions: label = 249mm (wide) x 130mm (high)  
Scale: 100% of A4  
Date: 31 July 2008

## Label Front Panel

---

### **POISON**

**KEEP OUT OF REACH OF CHILDREN  
READ SAFETY DIRECTIONS BEFORE OPENING OR USING  
FOR ANIMAL TREATMENT ONLY**

## **Q-drench** **multi-combination drench for sheep**

ACTIVE CONSTITUENTS: 40g/L LEVAMISOLE HYDROCHLORIDE, 37.5g/L CLOSANTEL,  
25g/L ALBENDAZOLE, 1.0g/L ABAMECTIN

For the treatment and control in sheep of susceptible gastro-intestinal roundworms (including strains with single or dual resistance to macrocyclic lactones, benzimidazoles, levamisole or closantel, and strains of *Haemonchus contortus* with emerging resistance to closantel). It is also effective against lungworm, tapeworms, mature and late immature liver fluke, nasal bot and itch mite.

[2.5 L]



[JUROX logo]

---

## Label Back Panel

**INDICATIONS:** Q-Drench Multi-Combination Drench for Sheep contains abamectin, albendazole, closantel and levamisole, which are members of the macrocyclic lactone, benzimidazole, salicylanilide and imidazothiazole groups respectively.

It is a broad-spectrum oral anthelmintic which can be used against susceptible gastro-intestinal parasites, and to prevent the introduction of resistant strains on to a property.

It is effective against sensitive strains of the following parasites of sheep:

### Adult and immature gastrointestinal roundworms

- Barber's Pole Worm (*Haemonchus contortus*) - including inhibited L4 stage and strains with single, dual or triple resistance to macrocyclic lactones, benzimidazoles, levamisole or closantel, and strains with emerging resistance to closantel.
- Small Brown Stomach Worm (*Teladorsagia (Ostertagia) circumcincta*) - (including inhibited L4 stage and strains with single or dual resistance to macrocyclic lactones, benzimidazoles or levamisole:
- Black Scour Worm (*Trichostrongylus colubriformis*) including strains with single or dual resistance to macrocyclic lactones, benzimidazoles or levamisole.
- Large Stomach Worm (*Haemonchus placei*)
- Stomach Hair Worm (*Trichostrongylus axei*)
- Black Scour Worm (*Trichostrongylus vitrinus*)
- Small Intestinal Worm (*Cooperia spp*)
- Thin-Necked Intestinal Worm (*Nematodirus spp*)
- Large mouthed bowel worm (*Chabertia ovina*)
- Nodule Worm (*Oesophagostomum columbianum*)
- Large Bowel Worm (*Oesophagostomum venulosum*)
- Whip worm (*Trichuris ovis*)
- Intestinal threadworm (*Strongyloides papillosus*)
- Hookworm (*Bunostomum spp*)



### Nasal Bot (*Oestrus ovis*)

**Lungworm** - Large lungworm (*Dictyocaulus viviparus*)

**Liver Fluke** (*Fasciola hepatica*) - mature fluke and immature forms including 6 week old stages. Reduces the output of viable fluke eggs.

**Tapeworms** (*Monezia spp*) - heads and segments

**Itch mite** (*Psorergates ovis*)

## Label Back Panel

---

### **DIRECTIONS FOR USE:**

#### **RESTRAINTS:**

**DO NOT USE** in female sheep which are producing or may in the future produce milk or milk products for human consumption.

**DO NOT USE** in lambs under 6 weeks of age or 10 kg bodyweight.

For use as a quarantine drench: Treat all animals on arrival, or ideally at farm of origin, and hold in yards for 24 hours before release.

For use in a strategic worm control program: speak to your animal health adviser or veterinarian.

Resistance may develop to any chemical. Ask your local veterinary practitioner or animal health adviser for recommended parasite management practices for your area to reduce development of resistance. It is advisable that a resistance test be conducted before any parasite treatment is used.

### **PRECAUTIONS:**

Exercise care in handling weak, pregnant and young animals to avoid unnecessary stress.

Avoid yarding animals off-feed overnight, and ensure animals have access to water when yarded prior to drenching.

Recommended dose should not be exceeded, except under veterinary supervision.

### **Dosage and administration**

- Dose: 1 mL per 5 kg bodyweight.
- Administer orally.
- Check the accuracy of the drench equipment before and during use.
- A representative sample of animals should be weighed before treatment.
- Dose the mob to the heaviest animal by liveweight in each group (ewes, wethers, rams, lambs). Do not underdose.
- Where there is a large variation in size within the group, dose rate should be based on the label directions for each weight range. Drafting into two or more lines may be appropriate, to avoid excessive overdosing.
- **SHAKE WELL BEFORE USE**



## DOSAGE TABLE

Liveweight	Dose	2.5L treats
11 - 15 kg	3mL	833
16 - 20 kg	4mL	625
21 – 25 kg	5mL	500
26 - 30 kg	6mL	416
31 – 35 kg	7mL	357
36 – 40 kg	8 mL	312
41 – 45 kg	9mL	277
46 – 50kg	10mL	250
51 – 55 kg	11mL	227
56 – 60kg	12ml	208
61 – 65 kg	13mL	192
66 – 70kg	14mL	178
71 – 75 kg	15 mL	166



Sheep in excess of 75 kg to be dosed at 1 mL per 5 kg bodyweight.

## WITHHOLDING PERIODS:

**MEAT: DO NOT USE** less than 28 days before slaughter for human consumption.

**MILK: DO NOT USE** in female sheep which are producing or may in the future produce milk or milk products for human consumption.

## TRADE ADVICE

**EXPORT SLAUGHTER INTERVAL (ESI):** This product does not have an ESI established. For advice on the ESI contact Jurox Pty Ltd on 1800 023 312 before using this product.

**SAFETY DIRECTIONS:** Poisonous if absorbed by skin contact or swallowed. May irritate the eyes and skin. Avoid contact with the eyes and skin. When opening the container and pouring large quantities wear elbow-length PVC gloves. After each day's use wash gloves. Wash hands after use.

**FIRST AID:** If poisoning occurs, contact a doctor or Poisons Information Centre, phone Australia 131126. If skin contact occurs, remove contaminated clothing and wash skin thoroughly.

Further information is contained in the Material Safety Data Sheet (MSDS) which is available from the manufacturer. Phone 1800 023 312.

## Protection of Wildlife, Fish, Crustaceans and the Environment.

Abamectin is extremely toxic to aquatic species. Do not contaminate streams, rivers or waterways with the chemical or used container.

---

## Label Back Panel

---

**Disposal.** Triple or (preferably) pressure rinse containers. Do not dispose of undiluted chemicals on-site. Return clean container for recycling where this is an option, or for disposal at a landfill authorised to accept that waste. If neither of these options is available, bury the container below 500 mm in a disposal pit specifically marked and set up for this purpose clear of waterways, vegetation and roots. Empty containers should not be burned.

STORE below 30°C (Room Temperature), in original container. Do not freeze. Do not store at low temperature.

Jurox Pty Limited  
85 Gardiners Rd  
Rutherford NSW 2320  
Infoline 1800 023 312



APVMA Approval No. 56573/2.5L/0708

B.

EXP.

[Item number]

---





100% of final size (190 x 209mm)  
209 mm

APVMA FILE 56573\_45308\_5L\_front\_MPL\_V01.pdf  
Dimensions: Label = 209mm x 190mm  
Scale: 100% of A4  
Date: 31 July 2008

190 mm

# POISON

KEEP OUT OF REACH OF CHILDREN  
READ SAFETY DIRECTIONS BEFORE OPENING OR USING  
FOR ANIMAL TREATMENT ONLY

# Q-drench<sup>®</sup>

## MULTI-COMBINATION DRENCH FOR SHEEP

ACTIVE CONSTITUENTS: 40g/L LEVAMISOLE HYDROCHLORIDE,  
37.5g/L CLOSANTEL, 25g/L ALBENDAZOLE, 1.0g/L ABAMECTIN



For the treatment and control in sheep of susceptible gastro-intestinal roundworms (including strains with single or dual resistance to macrocyclic lactones, benzimidazoles, levamisole or closantel, and strains of *Haemonchus contortus* with emerging resistance to closantel). It is also effective against lungworm, tapeworms, mature and late immature liver fluke, nasal bot and itch mite.

5L

**jurox**

408160



100% of final size (190 x 209mm)  
209 mm

APVMA FILE: 56573\_45308\_5L\_rear\_MPL\_V01.pdf  
Dimensions: Label = 209mm (wide) x 190mm (high)  
Scale: 100% of A4  
Date: 5 August 2008

190 mm

# Q-drench®

## INDICATIONS:

Q-drench Multi-Combination Drench for Sheep contains abamectin, albendazole, closantel and levamisole, which are members of the macrocyclic lactone, benzimidazole, salicylanilide and imidazothiazole groups respectively. It is a broad-spectrum oral anthelmintic which can be used against susceptible gastro-intestinal parasites and to prevent the introduction of resistant strains on to a property.  
It is effective against sensitive strains of the following parasites of sheep:

### Adult and immature gastrointestinal roundworms:

- Barber's Pole Worm (*Haemonchus contortus*) - including inhibited L4 stage and strains with single, dual or triple resistance to macrocyclic lactones, benzimidazoles, levamisole or closantel, and strains with emerging resistance to closantel.
- Small Brown Stomach Worm (*Teladorsagia circumcincta*) - including inhibited L4 stage and strains with single or dual resistance to macrocyclic lactones, benzimidazoles or levamisole.
- Black Scour Worm (*Trichostrongylus colubriformis*) including strains with single or dual resistance to macrocyclic lactones, benzimidazoles or levamisole.
- Large Stomach Worm (*Haemonchus placei*)
- Stomach hair worm (*Trichostrongylus axei*)
- Black Scour Worm (*Trichostrongylus vitrinus*)
- Small Intestinal Worm (*Cooperia* spp)
- Thin-Necked Intestinal Worm (*Nematodirus* spp)
- Large Mouthed Bowel Worm (*Chabertia ovina*)
- Nodule Worm (*Oesophagostomum columbianum*)
- Large Bowel Worm (*Oesophagostomum venulosum*)
- Whip Worm (*Trichuris ovis*)
- Intestinal Threadworm (*Strongyloides papillosus*)
- Hookworm (*Bunostomum* spp)

### Nasal Bot (*Oestrus ovis*)

**Lungworm** - Large lungworm (*Dictyocaulus viviparus*)

**Liver Fluke** (*Fasciola hepatica*) - mature fluke and immature forms including 6 week old stages; reduces the output of viable fluke eggs.

**Tapeworms** (*Monezia* spp.) - heads and segments

**Itch mite** (*Psorergates ovis*)

## DIRECTIONS FOR USE:

### RESTRAINTS:

**DO NOT USE in female sheep which are producing or may in the future produce milk or milk products for human consumption.**  
**DO NOT USE in lambs under 6 weeks of age or 10 kg bodyweight.**

**For use as a quarantine drench:** Treat all animals on arrival, or ideally at farm of origin, and hold in yards for 24 hours before release.

**For use in a strategic worm control program:** Speak to your animal health adviser or veterinarian.

Resistance may develop to any chemical. Ask your local veterinary practitioner or animal health adviser for recommended parasite management practices for your area to reduce development of resistance. It is advisable that a resistance test be conducted before any parasite treatment is used.

### PRECAUTIONS:

Exercise care in handling weak, pregnant and young animals to avoid unnecessary stress. Avoid yarding animals off-feed overnight, and ensure animals have access to water when yarded prior to drenching. Recommended dose should not be exceeded, except under veterinary supervision.

## SHAKE WELL BEFORE USE

### DOSAGE TABLE:

Liveweight	Dose	5 L treats
11 - 15 kg	3 mL	1666
16 - 20 kg	4 mL	1250
21 - 25 kg	5 mL	1000
26 - 30 kg	6 mL	833
31 - 35 kg	7 mL	714
36 - 40 kg	8 mL	625
41 - 45 kg	9 mL	555
46 - 50 kg	10 mL	500
51 - 55 kg	11 mL	454
56 - 60 kg	12 mL	416
61 - 65 kg	13 mL	384
66 - 70 kg	14 mL	357
71 - 75 kg	15 mL	333

### Dosage and administration

- Dose: 1 mL per 5 kg bodyweight
- Administer orally
- Check the accuracy of the drench equipment before and during use
- A representative sample of animals should be weighed before treatment
- Dose the mob to the heaviest animal by liveweight in each group (ewes, wethers, rams, lambs). Do not underdose
- Where there is a large variation in size within the group, dose rate should be based on the label directions for each weight range. Drafting into two or more lines may be appropriate, to avoid excessive overdosing

Sheep in excess of 75 kg to be dosed at 1mL per 5 kg bodyweight.

### WITHHOLDING PERIODS:

**MEAT: DO NOT USE less than 28 days before slaughter for human consumption.**

**MILK: DO NOT USE in female sheep which are producing or may in the future produce milk or milk products for human consumption.**

### TRADE ADVICE

**EXPORT SLAUGHTER INTERVAL (ESI): This product does not have an ESI established. For advice on the ESI contact Jurox Pty Ltd on 1800 023 312 before using this product.**

**SAFETY DIRECTIONS:** Poisonous if absorbed by skin contact or swallowed. May irritate the eyes and skin. Avoid contact with the eyes and skin. When opening the container and pouring large quantities wear elbow-length PVC gloves. After each day's use wash gloves. Wash hands after use.

**FIRST AID:** If poisoning occurs, contact a doctor or Poisons Information Centre, phone 13 11 26. If skin contact occurs, remove contaminated clothing and wash skin thoroughly.

Further information is contained in the Material Safety Data Sheet (MSDS) which is available from the manufacturer. Phone 1800 023 312.

**PROTECTION OF WILDLIFE, FISH, CRUSTACEANS AND THE ENVIRONMENT:** Abamectin is extremely toxic to aquatic species. Do not contaminate dams, rivers, streams or other waterways with the chemical or used container.

**DISPOSAL:** Triple or (preferably) pressure rinse containers. Do not dispose of undiluted chemicals on-site. Return clean container for recycling where this is an option, or for disposal at a landfill authorised to accept that waste. If neither of these options is available, bury the container below 500 mm in a disposal pit specifically marked and set up for this purpose clear of waterways, vegetation and roots.

Empty containers should not be burned.

STORE below 30°C (room temperature), in original container. Do not freeze. Do not store at low temperature.

APVMA Approval No. 56573/5L/0708

(B)

EXP.



Jurox Pty Ltd  
85 Gardiner Road  
Rutherford NSW 2320  
Infoline 1800 023 312



9 338094 000004

408172

100% of final size (150 x 150mm)

150 mm

150 mm

APVMA FILE: 56573\_45308\_10L\_front\_MPL\_V01.pdf

Dimensions: Label = 150mm x 150mm

Scale: 100% of A4

Date: 31 July 2008

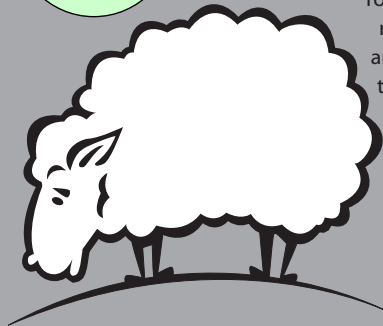
**POISON**  
**KEEP OUT OF REACH OF CHILDREN**  
**READ SAFETY DIRECTIONS BEFORE**  
**OPENING OR USING**  
**FOR ANIMAL TREATMENT ONLY**

**Q-drench<sup>®</sup>**

**MULTI-COMBINATION DRENCH FOR SHEEP**

**ACTIVE CONSTITUENTS: 40 g/L LEVAMISOLE HYDROCHLORIDE,  
37.5 g/L CLOSANTEL, 25 g/L ALBENDAZOLE, 1.0 g/L ABAMECTIN**

For the treatment and control in sheep of susceptible gastro-intestinal roundworms (including strains with single or dual resistance to macrocyclic lactones, benzimidazoles, levamisole or closantel, and strains of *Haemonchus contortus* with emerging resistance to closantel). It is also effective against lungworm, tapeworms, mature and late immature liver fluke, nasal bot and itch mite.



**10 L**

**Jurox**

408166

100% of final size (150 x 150 mm)

150 mm

150 mm

APVMA FILE: 56573\_45308\_10L\_rear\_MPL\_V01.pdf  
Dimensions: label = 150mm (wide) x 150mm (high)  
Scale: 100% of A4  
Date: 31 July 2008

## Q-drench®

### INDICATIONS:

Q-drench Multi-Combination Drench for Sheep contains abamectin, albendazole, closantel and levamisole, which are members of the macrocyclic lactone, benzimidazole, salicylanilide and imidazothiazole groups respectively. It is a broad-spectrum oral anthelmintic which can be used against susceptible gastro-intestinal parasites and to prevent the introduction of resistant strains on to a property.

It is effective against sensitive strains of the following parasites of sheep:

### Adult and immature gastrointestinal roundworms:

- Barber's Pole Worm (*Haemonchus contortus*) - including inhibited L4 stage and strains with single, dual or triple resistance to macrocyclic lactones, benzimidazoles, levamisole or closantel, and strains with emerging resistance to closantel.
- Small Brown Stomach Worm (*Teladorsagia (Ostertagia) circumcincta*) - including inhibited L4 stage and strains with single or dual resistance to macrocyclic lactones, benzimidazoles or levamisole.
- Black Scour Worm (*Trichostrongylus colubriformis*) including strains with single or dual resistance to macrocyclic lactones, benzimidazoles or levamisole.
- Large Stomach Worm (*Haemonchus placei*)
- Stomach Hair Worm (*Trichostrongylus axei*)
- Black Scour Worm (*Trichostrongylus vitrinus*)
- Small Intestinal Worm (*Cooperia* spp)
- Thin-Necked Intestinal Worm (*Nematodirus* spp)
- Large Mouthed Bowel Worm (*Chabertia ovina*)
- Nodule Worm (*Oesophagostomum columbianum*)
- Large Bowel Worm (*Oesophagostomum venulosum*)
- Whip Worm (*Trichuris ovis*)
- Intestinal Threadworm (*Strongyloides papillosus*)
- Hookworm (*Bunostomum* spp)
- Nasal Bot (*Oestrus ovis*)

**Lungworm** - Large lungworm (*Dictyocaulus viviparus*)

**Liver Fluke** (*Fasciola hepatica*) - mature fluke and immature forms including 6 week old stages. Reduces the output of viable fluke eggs.

**Tapeworms** (*Monezia* spp.) - heads and segments

**Itch mite** (*Psorergates ovis*)

### DIRECTIONS FOR USE:

#### RESTRAINTS:

**DO NOT USE in female sheep which are producing or may in the future produce milk or milk products for human consumption.**

**DO NOT USE in lambs under 6 weeks of age or 10 kg bodyweight.**

For use as a quarantine drench: Treat all animals on arrival, or ideally at farm of origin, and hold in yards for 24 hours before release.

For use in a strategic worm control program: Speak to your animal health adviser or veterinarian.

Resistance may develop to any chemical. Ask your local veterinary practitioner or animal health adviser for recommended parasite management practices for your area to reduce development of resistance. It is advisable that a resistance test be conducted before any parasite treatment is used.

### PRECAUTIONS:

Exercise care in handling weak, pregnant and young animals to avoid unnecessary stress. Avoid yarding animals off-feed overnight, and ensure animals have access to water when yarded prior to drenching. Recommended dose should not be exceeded, except under veterinary supervision.

### SHAKE WELL BEFORE USE

#### DOSAGE TABLE

Liveweight	Dose	10 L treats
11 - 15 kg	3 mL	3333
16 - 20 kg	4 mL	2500
21 - 25 kg	5 mL	2000
26 - 30 kg	6 mL	1666
31 - 35 kg	7 mL	1428
36 - 40 kg	8 mL	1250
41 - 45 kg	9 mL	1111
46 - 50 kg	10 mL	1000
51 - 55 kg	11 mL	909
56 - 60 kg	12 mL	833
61 - 65 kg	13 mL	769
66 - 70 kg	14 mL	714
71 - 75 kg	15 mL	666

### Dosage and administration

- Dose: 1 mL per 5 kg bodyweight.
- Administer orally.
- Check the accuracy of the drench equipment before and during use.
- A representative sample of animals should be weighed before treatment.
- Dose the mob to the heaviest animal by liveweight in each group (ewes, wethers, rams, lambs). Do not underdose.
- Where there is a large variation in size within the group, dose rate should be based on the label directions for each weight range. Drafting into two or more lines may be appropriate, to avoid excessive overdosing.

Sheep in excess of 75 kg to be dosed at 1 mL per 5 kg bodyweight.

### WITHHOLDING PERIODS:

**MEAT: DO NOT USE less than 28 days before slaughter for human consumption.**

**MILK: DO NOT USE in female sheep which are producing or may in the future produce milk or milk products for human consumption.**

### TRADE ADVICE

**EXPORT SLAUGHTER INTERVAL (ESI): This product does not have an ESI established. For advice on the ESI contact Jurox Pty Ltd on 1800 023 312 before using this product.**

**SAFETY DIRECTIONS:** Poisonous if absorbed by skin contact or swallowed. May irritate the eyes and skin. Avoid contact with the eyes and skin. When opening the container and pouring large quantities wear elbow-length PVC gloves. After each day's use wash gloves. Wash hands after use.

**FIRST AID:** If poisoning occurs, contact a doctor or Poisons Information Centre, phone 13 11 26. If skin contact occurs, remove contaminated clothing and wash skin thoroughly.

Further information is contained in the Material Safety Data Sheet (MSDS) which is available from the manufacturer. Phone 1800 023 312.

### PROTECTION OF WILDLIFE, FISH, CRUSTACEANS AND THE ENVIRONMENT:

Abamectin is extremely toxic to aquatic species. Do not contaminate dams, rivers, streams or other waterways with the chemical or used container.

**DISPOSAL:** Triple or (preferably) pressure rinse containers. Do not dispose of undiluted chemicals on-site. Return clean container for recycling where this is an option, or for disposal at a landfill authorised to accept that waste. If neither of these options is available, bury the container below 500 mm in a disposal pit specifically marked and set up for this purpose clear of waterways, vegetation and roots. Empty containers should not be burnt.

STORE below 30°C (room temperature), in original container. Do not freeze. Do not store at low temperature.

APVMA Approval No. 56573/10L/0708

(B)

EXP.



Jurox Pty Ltd  
85 Gardiner Road  
Rutherford NSW 2320  
Infoline 1800 023 312



9 338094 000011

408268

## Label Front Panel

---

### **POISON**

**KEEP OUT OF REACH OF CHILDREN  
READ SAFETY DIRECTIONS BEFORE OPENING OR USING  
FOR ANIMAL TREATMENT ONLY**

## **Q-drench** **multi-combination drench for sheep**

ACTIVE CONSTITUENTS: 40g/L LEVAMISOLE HYDROCHLORIDE, 37.5g/L CLOSANTEL,  
25g/L ALBENDAZOLE, 1.0g/L ABAMECTIN

For the treatment and control in sheep of susceptible gastro-intestinal roundworms (including strains with single or dual resistance to macrocyclic lactones, benzimidazoles, levamisole or closantel, and strains of *Haemonchus contortus* with emerging resistance to closantel). It is also effective against lungworm, tapeworms, mature and late immature liver fluke, nasal bot and itch mite.

[20 L]



*[JUROX logo]*

---

## Label Back Panel

**INDICATIONS:** Q-Drench Multi-Combination Drench for Sheep contains abamectin, albendazole, closantel and levamisole, which are members of the macrocyclic lactone, benzimidazole, salicylanilide and imidazothiazole groups respectively.

It is a broad-spectrum oral anthelmintic which can be used against susceptible gastro-intestinal parasites, and to prevent the introduction of resistant strains on to a property.

It is effective against sensitive strains of the following parasites of sheep:

### Adult and immature gastrointestinal roundworms

- Barber's Pole Worm (*Haemonchus contortus*) - including inhibited L4 stage and strains with single, dual or triple resistance to macrocyclic lactones, benzimidazoles, levamisole or closantel, and strains with emerging resistance to closantel.
- Small Brown Stomach Worm (*Teladorsagia (Ostertagia) circumcincta*) - (including inhibited L4 stage and strains with single or dual resistance to macrocyclic lactones, benzimidazoles or levamisole:
- Black Scour Worm (*Trichostrongylus colubriformis*) including strains with single or dual resistance to macrocyclic lactones, benzimidazoles or levamisole.
- Large Stomach Worm (*Haemonchus placei*)
- Stomach Hair Worm (*Trichostrongylus axei*)
- Black Scour Worm (*Trichostrongylus vitrinus*)
- Small Intestinal Worm (*Cooperia spp*)
- Thin-Necked Intestinal Worm (*Nematodirus spp*)
- Large mouthed bowel worm (*Chabertia ovina*)
- Nodule Worm (*Oesophagostomum columbianum*)
- Large Bowel Worm (*Oesophagostomum venulosum*)
- Whip worm (*Trichuris ovis*)
- Intestinal threadworm (*Strongyloides papillosus*)
- Hookworm (*Bunostomum spp*)



**Nasal Bot** (*Oestrus ovis*)

**Lungworm** - Large lungworm (*Dictyocaulus viviparus*)

**Liver Fluke** (*Fasciola hepatica*) - mature fluke and immature forms including 6 week old stages. Reduces the output of viable fluke eggs.

**Tapeworms** (*Monezia spp*) - heads and segments

**Itch mite** (*Psorergates ovis*)



## Label Back Panel (ctd)

---

### **DIRECTIONS FOR USE:**

#### **RESTRAINTS:**

**DO NOT USE** in female sheep which are producing or may in the future produce milk or milk products for human consumption.

**DO NOT USE** in lambs under 6 weeks of age or 10 kg bodyweight.

For use as a quarantine drench: Treat all animals on arrival, or ideally at farm of origin, and hold in yards for 24 hours before release.

For use in a strategic worm control program: speak to your animal health adviser or veterinarian.

Resistance may develop to any chemical. Ask your local veterinary practitioner or animal health adviser for recommended parasite management practices for your area to reduce development of resistance. It is advisable that a resistance test be conducted before any parasite treatment is used.

### **PRECAUTIONS:**

Exercise care in handling weak, pregnant and young animals to avoid unnecessary stress.

Avoid yarding animals off-feed overnight, and ensure animals have access to water when yarded prior to drenching.

Recommended dose should not be exceeded, except under veterinary supervision.

### **Dosage and administration**

- Dose: 1 mL per 5 kg bodyweight.
- Administer orally.
- Check the accuracy of the drench equipment before and during use.
- A representative sample of animals should be weighed before treatment.
- Dose the mob to the heaviest animal by liveweight in each group (ewes, wethers, rams, lambs). Do not underdose.
- Where there is a large variation in size within the group, dose rate should be based on the label directions for each weight range. Drafting into two or more lines may be appropriate, to avoid excessive overdosing.
- **SHAKE WELL BEFORE USE**



## Label Back Panel (ctd)

---

### DOSAGE TABLE

Liveweight	Dose	20L treats
11 - 15 kg	3mL	6666
16 - 20 kg	4mL	5000
21 – 25 kg	5mL	4000
26 - 30 kg	6mL	3333
31 – 35 kg	7mL	2857
36 – 40 kg	8 mL	2500
41 – 45 kg	9mL	2222
46 – 50kg	10mL	2000
51 – 55 kg	11mL	1818
56 – 60kg	12ml	1666
61 – 65 kg	13mL	1538
66 – 70kg	14mL	1428
71 – 75 kg	15 mL	1333



Sheep in excess of 75 kg to be dosed at 1 mL per 5 kg bodyweight.

### WITHHOLDING PERIODS:

**MEAT: DO NOT USE less than 28 days before slaughter for human consumption.**

**MILK: DO NOT USE in female sheep which are producing or may in the future produce milk or milk products for human consumption.**

### TRADE ADVICE

**EXPORT SLAUGHTER INTERVAL (ESI): This product does not have an ESI established. For advice on the ESI contact Jurox Pty Ltd on 1800 023 312 before using this product.**

**SAFETY DIRECTIONS:** Poisonous if absorbed by skin contact or swallowed. May irritate the eyes and skin. Avoid contact with the eyes and skin. When opening the container and pouring large quantities wear elbow-length PVC gloves. After each day's use wash gloves. Wash hands after use.

**FIRST AID:** If poisoning occurs, contact a doctor or Poisons Information Centre, phone Australia 131126. If skin contact occurs, remove contaminated clothing and wash skin thoroughly.

Further information is contained in the Material Safety Data Sheet (MSDS) which is available from the manufacturer. Phone 1800 023 312.

### Protection of Wildlife, Fish, Crustaceans and the Environment.

Abamectin is extremely toxic to aquatic species. Do not contaminate streams, rivers or waterways with the chemical or used container.

## Label Back Panel (ctd)

---

**Disposal.** Triple or (preferably) pressure rinse containers. Do not dispose of undiluted chemicals on-site. Return clean container for recycling where this is an option, or for disposal at a landfill authorised to accept that waste. If neither of these options is available, bury the container below 500 mm in a disposal pit specifically marked and set up for this purpose clear of waterways, vegetation and roots. Empty containers should not be burned.

STORE below 30°C (Room Temperature), in original container. Do not freeze. Do not store at low temperature.

Jurox Pty Limited  
85 Gardiners Rd  
Rutherford NSW 2320  
Infoline 1800 023 312



APVMA Approval No. 56573/[20L]/0708

B.	EXP.	[Item number]
----	------	---------------

---

## Carton Front Panel

---

### **POISON**

**KEEP OUT OF REACH OF CHILDREN  
READ SAFETY DIRECTIONS BEFORE OPENING OR USING  
FOR ANIMAL TREATMENT ONLY**

## **Q-drench** **multi-combination drench for sheep**

ACTIVE CONSTITUENTS: 40g/L LEVAMISOLE HYDROCHLORIDE, 37.5g/L CLOSANTEL,  
25g/L ALBENDAZOLE, 1.0g/L ABAMECTIN

For the treatment and control in sheep of susceptible gastro-intestinal roundworms (including strains with single or dual resistance to macrocyclic lactones, benzimidazoles, levamisole or closantel, and strains of *Haemonchus contortus* with emerging resistance to closantel). It is also effective against lungworm, tapeworms, mature and late immature liver fluke, nasal bot and itch mite.



[1 L] [2.5L] [10 L] [20L]

*[JUROX logo]*

---

## Carton Panels 2, 3, 4

**INDICATIONS:** Q-Drench Multi-Combination Drench for Sheep contains abamectin, albendazole, closantel and levamisole, which are members of the macrocyclic lactone, benzimidazole, salicylanilide and imidazothiazole groups respectively.

It is a broad-spectrum oral anthelmintic which can be used against susceptible gastro-intestinal parasites, and to prevent the introduction of resistant strains on to a property.

It is effective against sensitive strains of the following parasites of sheep:

### Adult and immature gastrointestinal roundworms

- Barber's Pole Worm (*Haemonchus contortus*) - including inhibited L4 stage and strains with single, dual or triple resistance to macrocyclic lactones, benzimidazoles, levamisole or closantel, and strains with emerging resistance to closantel.
- Small Brown Stomach Worm (*Teladorsagia (Ostertagia) circumcincta*) - (including inhibited L4 stage and strains with single or dual resistance to macrocyclic lactones, benzimidazoles or levamisole:
- Black Scour Worm (*Trichostrongylus colubriformis*) including strains with single or dual resistance to macrocyclic lactones, benzimidazoles or levamisole.
- Large Stomach Worm (*Haemonchus placei*)
- Stomach Hair Worm (*Trichostrongylus axei*)
- Black Scour Worm (*Trichostrongylus vitrinus*)
- Small Intestinal Worm (*Cooperia spp*)
- Thin-Necked Intestinal Worm (*Nematodirus spp*)
- Large mouthed bowel worm (*Chabertia ovina*)
- Nodule Worm (*Oesophagostomum columbianum*)
- Large Bowel Worm (*Oesophagostomum venulosum*)
- Whip worm (*Trichuris ovis*)
- Intestinal threadworm (*Strongyloides papillosus*)
- Hookworm (*Bunostomum spp*)



### Nasal Bot (*Oestrus ovis*)

**Lungworm** - Large lungworm (*Dictyocaulus viviparus*)

**Liver Fluke** (*Fasciola hepatica*) - mature fluke and immature forms including 6 week old stages. Reduces the output of viable fluke eggs.

**Tapeworms** (*Monezia spp*) - heads and segments

**Itch mite** (*Psorergates ovis*)



## Carton Panels 2, 3, 4 (ctd)

---

### **DIRECTIONS FOR USE:**

#### **RESTRAINTS:**

**DO NOT USE** in female sheep which are producing or may in the future produce milk or milk products for human consumption.

**DO NOT USE** in lambs under 6 weeks of age or 10 kg bodyweight.

For use as a quarantine drench: Treat all animals on arrival, or ideally at farm of origin, and hold in yards for 24 hours before release.

For use in a strategic worm control program: speak to your animal health adviser or veterinarian.

Resistance may develop to any chemical. Ask your local veterinary practitioner or animal health adviser for recommended parasite management practices for your area to reduce development of resistance. It is advisable that a resistance test be conducted before any parasite treatment is used.

### **PRECAUTIONS:**

Exercise care in handling weak, pregnant and young animals to avoid unnecessary stress.

Avoid yarding animals off-feed overnight, and ensure animals have access to water when yarded prior to drenching.

Recommended dose should not be exceeded, except under veterinary supervision.

### **Dosage and administration**

- Dose: 1 mL per 5 kg bodyweight.
- Administer orally.
- Check the accuracy of the drench equipment before and during use.
- A representative sample of animals should be weighed before treatment.
- Dose the mob to the heaviest animal by liveweight in each group (ewes, wethers, rams, lambs). Do not underdose.
- Where there is a large variation in size within the group, dose rate should be based on the label directions for each weight range. Drafting into two or more lines may be appropriate, to avoid excessive overdosing.
- **SHAKE WELL BEFORE USE**



Liveweight	Dose	1L treats	2.5L treats	10L treats	20L treats
11 - 15 kg	3mL	333	833	3333	6666
16 - 20 kg	4mL	250	625	2500	5000
21 – 25 kg	5mL	200	500	2000	4000
26 - 30 kg	6mL	166	416	1666	3333
31 – 35 kg	7mL	142	357	1428	2857
36 – 40 kg	8 mL	125	312	1250	2500
41 – 45 kg	9mL	111	277	1111	2222
46 – 50kg	10mL	100	250	1000	2000
51 – 55 kg	11mL	90	227	909	1818
56 – 60kg	12ml	83	208	833	1666
61 – 65 kg	13mL	76	192	769	1538
66 – 70kg	14mL	71	178	714	1428
71 – 75 kg	15 mL	66	166	666	1333

Sheep in excess of 75 kg to be dosed at 1 mL per 5 kg bodyweight.



## Label Back Panel and Carton Panels 2, 3, 4 (ctd)

---

### **WITHHOLDING PERIODS:**

**MEAT: DO NOT USE** less than 28 days before slaughter for human consumption.

**MILK: DO NOT USE** in female sheep which are producing or may in the future produce milk or milk products for human consumption.

### **TRADE ADVICE**

**EXPORT SLAUGHTER INTERVAL (ESI):** This product does not have an ESI established. For advice on the ESI contact Jurox Pty Ltd on 1800 023 312 before using this product.

**SAFETY DIRECTIONS:** Poisonous if absorbed by skin contact or swallowed. May irritate the eyes and skin. Avoid contact with the eyes and skin. When opening the container and pouring large quantities wear elbow-length PVC gloves. After each day's use wash gloves. Wash hands after use.

**FIRST AID:** If poisoning occurs, contact a doctor or Poisons Information Centre, phone Australia 131126. If skin contact occurs, remove contaminated clothing and wash skin thoroughly.

Further information is contained in the Material Safety Data Sheet (MSDS) which is available from the manufacturer. Phone 1800 023 312.

### **Protection of Wildlife, Fish, Crustaceans and the Environment.**

Studies indicate that when abamectin comes into contact with soil, it readily and tightly binds to the soil and becomes inactive over time. It is highly toxic to fish and very highly toxic to aquatic invertebrates. DO NOT contaminate streams, rivers or waterways with the chemical or used containers.

**Disposal.** Triple or (preferably) pressure rinse containers. Do not dispose of undiluted chemicals on-site. Return clean container for recycling where this is an option, or for disposal at a landfill authorised to accept that waste. If neither of these options is available, bury the container below 500 mm in a disposal pit specifically marked and set up for this purpose clear of waterways, vegetation and roots. Empty containers should not be burned.

*(alternate statement for 1L pack)* DISPOSE of empty container by wrapping with paper and putting in garbage.

STORE below 30°C (Room Temperature), in original container. Do not freeze. Do not store at low temperature.

Jurox Pty Limited  
85 Gardiners Rd  
Rutherford NSW 2320  
Infoline 1800 023 312



APVMA Approval No. 56573/[1L] [2.5L][10L] [20L]/0708

B. EXP.

[Item number]

---